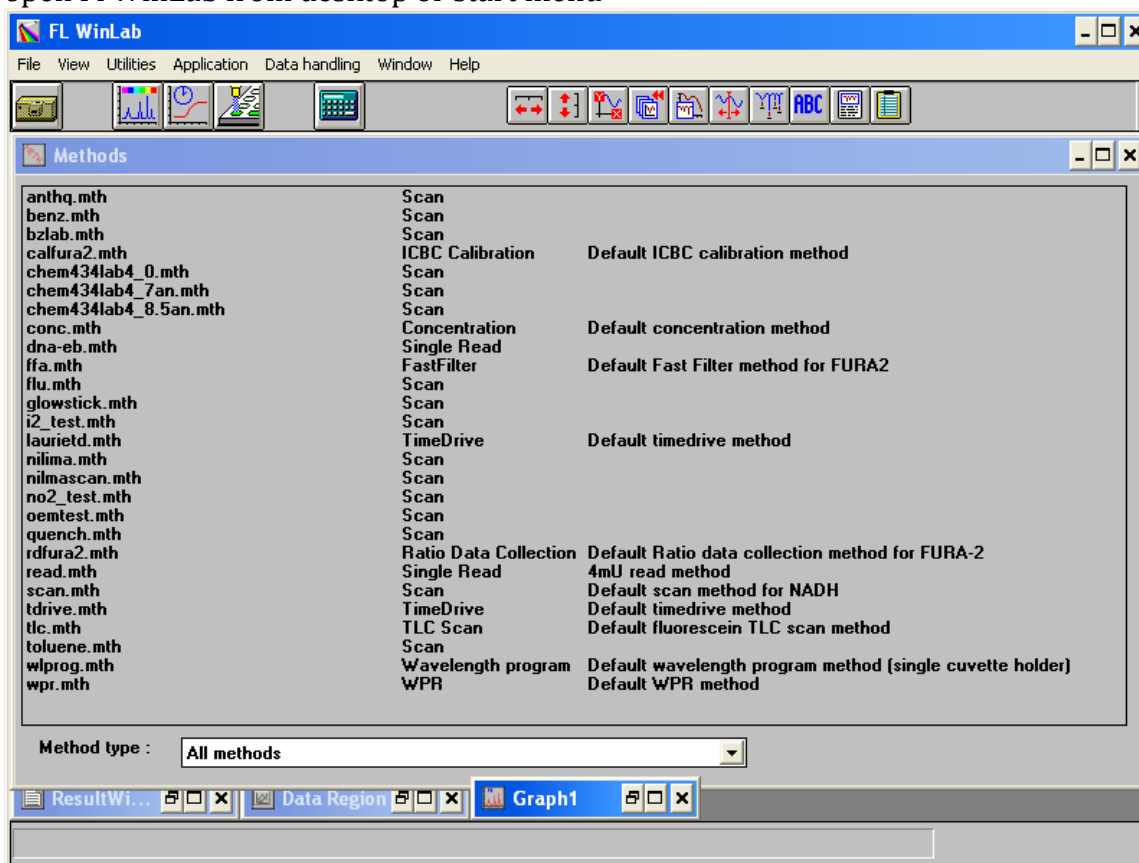
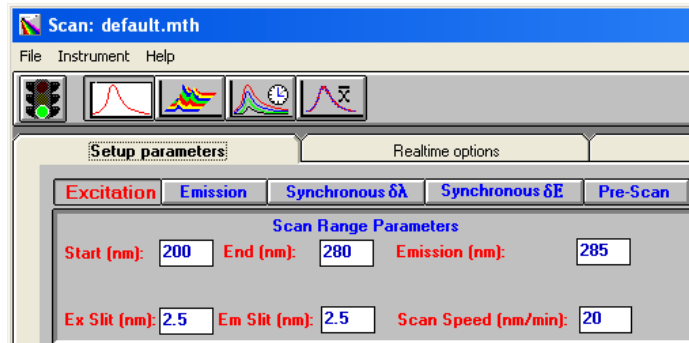
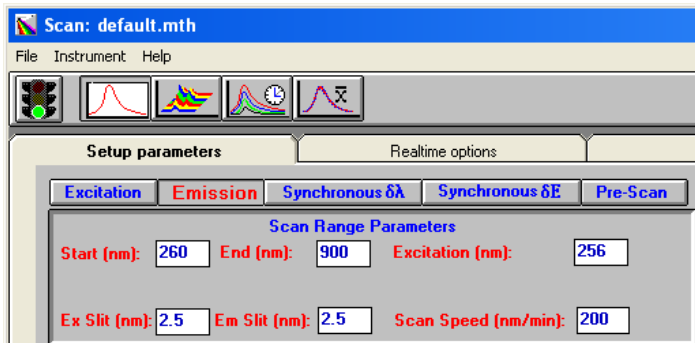


## Fluorimeter (3-2014)

1. turn on fluorimeter (left side, back)
2. log into computer account: fluser; password: fluser
3. open FL WinLab from desktop or start menu



4. application → scan
5. Begin with an emission scan:  
 Start: 260nm                      End: 500nm                      Excitation: 256 nm  
 Ex slit: 2.5nm                      Em slit: 2.5nm                      Scan speed: 500 nm/min

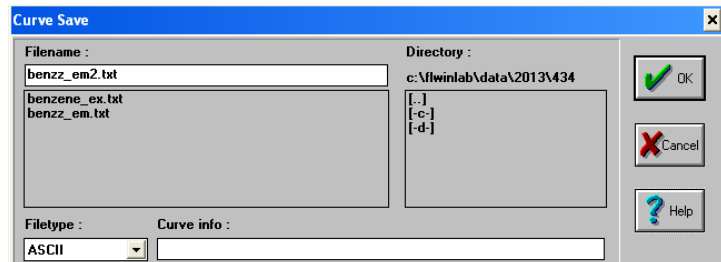
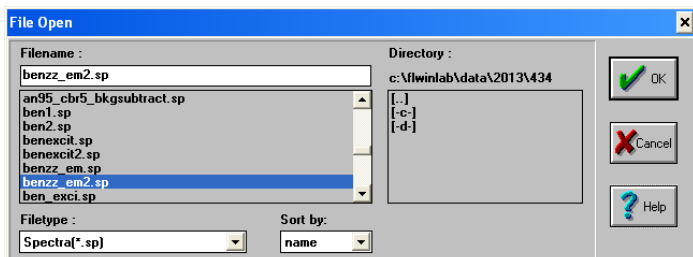


6. Next do an excitation scan:  
 Start: 200nm                      End: 260nm                      Emission: 285 nm  
 Ex slit: 2.5nm                      Em slit: 2.5nm                      Scan speed: 10 nm/min

7. click on traffic light to start scan



8. Save spectra in FL WinLab window: file→ open, select your file.



9. You data opens in a “graph 1” window. File→ save as → select your file as a .txt in ASCII format

10. Data is at c:\ FL WinLab\ Data\2013\